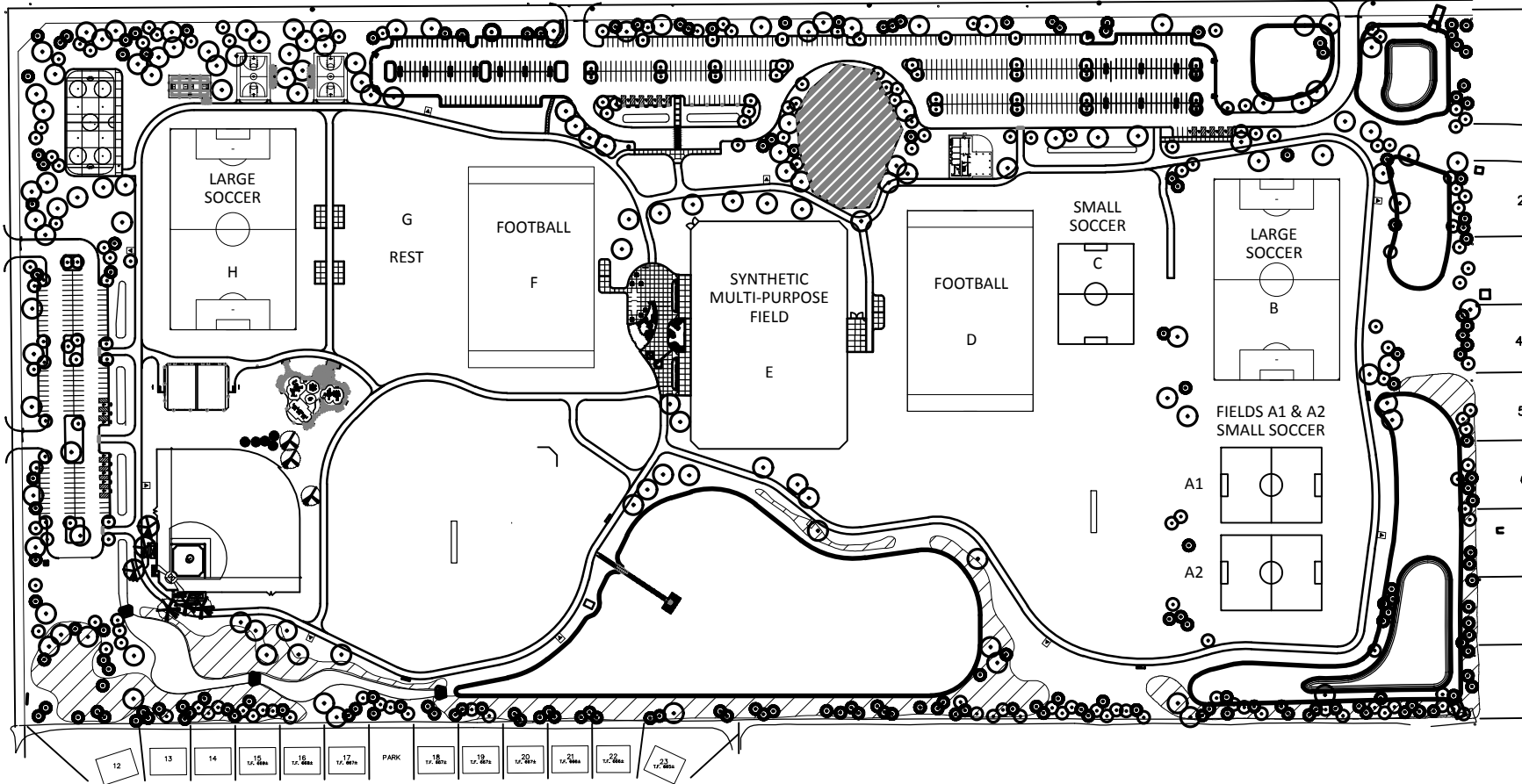
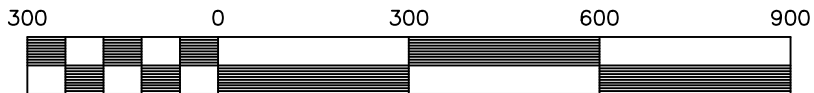


TAMARACK WEST
SUBDIVISION

111TH STREET



CENTURY TRACE SUBDIVISION
(VILLAGE OF PLAINFIELD)



NAPERVILLE PARK DISTRICT

Program Manager: Stephanie Almslie
Telephone 630-995-8927
E-Mail: sainslie@napervilleparks.org

Administrative Office
320 W. Jackson
Naperville, Illinois
60540-5275



Field Location Map

COMMISSIONERS PARK
3704 111TH STREET
NAPERVILLE, IL

DATE	REVISIONS

SCALE	1" = 300'
DATE	Fall 2019
PROJECT ID	
DRAWN BY	MP
CHECKED BY	SA

SHEET NO.
