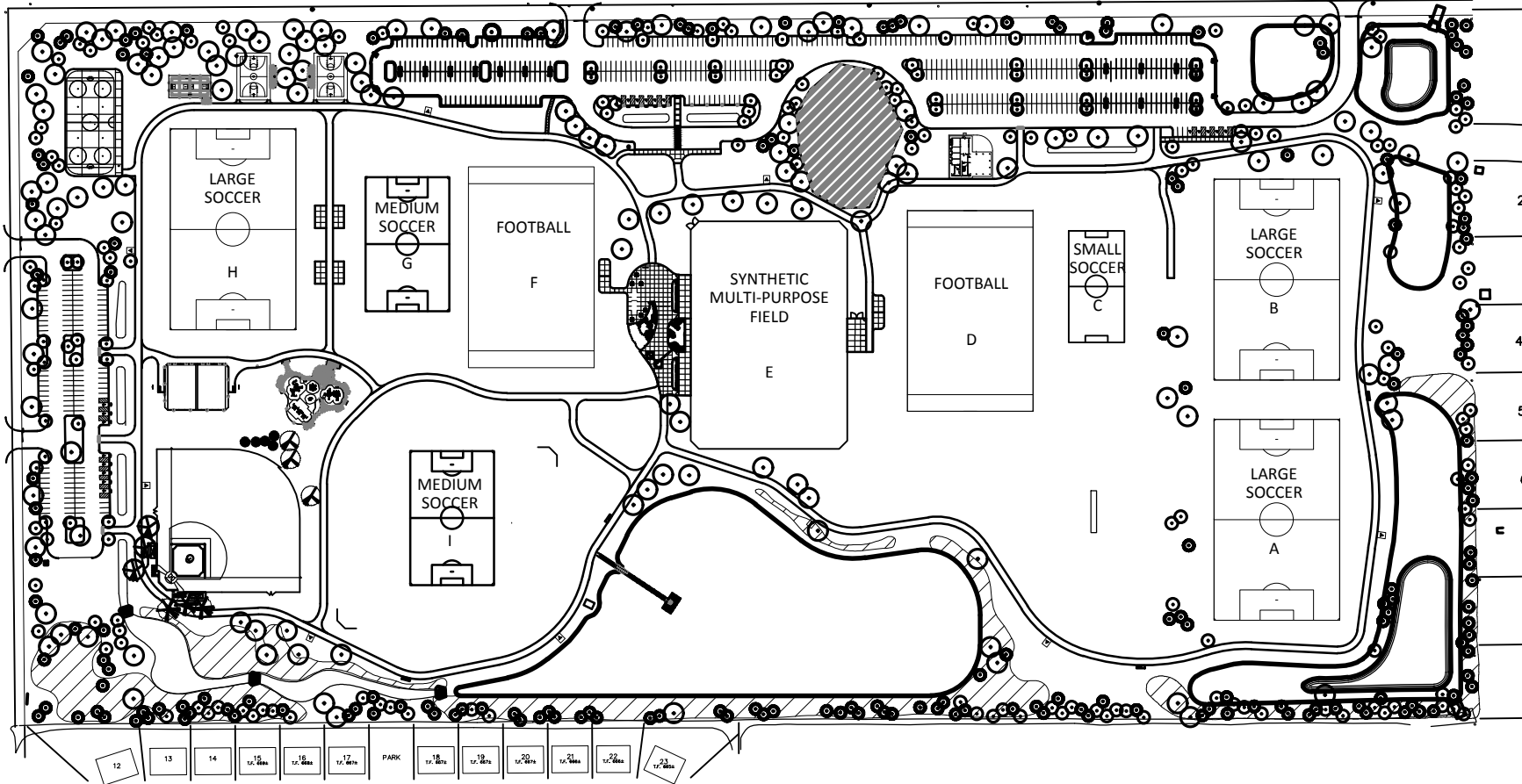
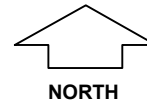
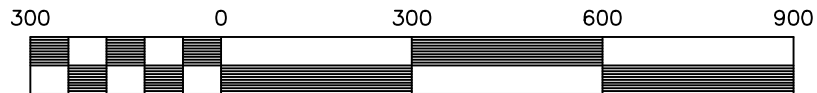


TAMARACK WEST  
SUBDIVISION

111TH STREET



CENTURY TRACE SUBDIVISION  
(VILLAGE OF PLAINFIELD)



NAPERVILLE PARK DISTRICT

Program Manager: Stephanie Almslie  
Telephone 630-995-8927  
E-Mail: [sainslie@napervilleparks.org](mailto:sainslie@napervilleparks.org)

Administrative Office  
320 W. Jackson  
Naperville, Illinois  
60540-5275



Field Location Map

COMMISSIONERS PARK  
3704 111TH STREET  
NAPERVILLE, IL

DATE	REVISIONS

SCALE	1" = 300'
DATE	Fall 2018
PROJECT ID	
DRAWN BY	MP
CHECKED BY	SA

SHEET NO.