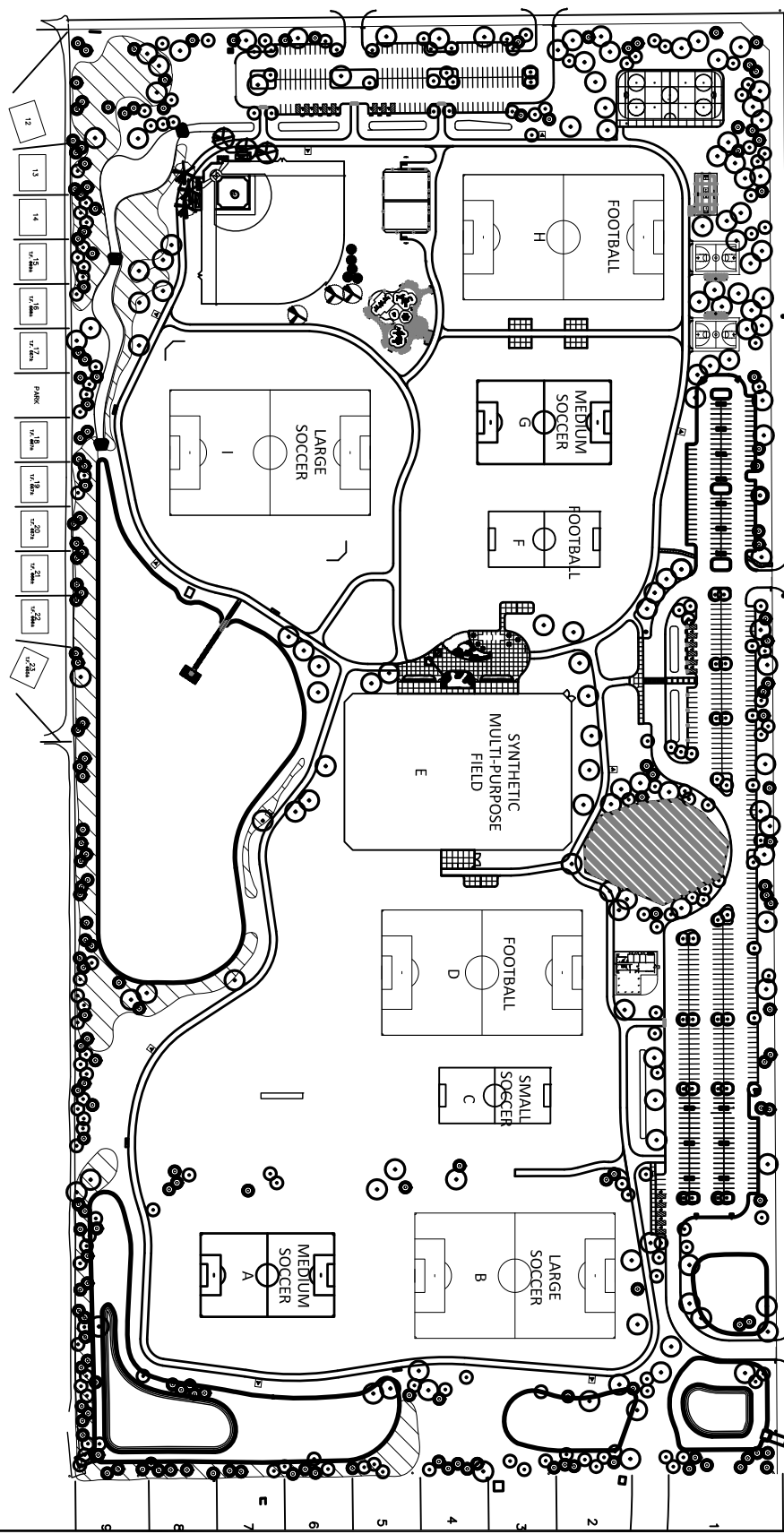
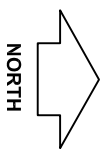
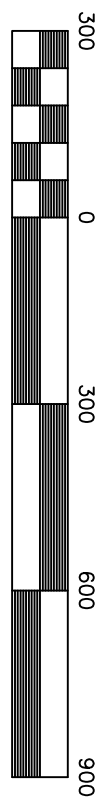


TAMARACK WEST
SUBDIVISION

111TH STREET



CENTURY TRACE SUBDIVISION
(VILLAGE OF PLAINFIELD)



Field Location Map

COMMISSIONERS PARK
3704 111TH STREET
NAPERVILLE, IL



NAPERVILLE PARK DISTRICT

Administrative Office
320 W. Jackson
Naperville, Illinois
60540-5275

Project Manager: Bock Atwell
Telephone 630/848-3534
E-Mail batwell@napervilleparks.org
Fax 630/848-5001

DATE	REVISIONS

SCALE	1" = 300'
DATE	Fall 2013
PROJECT ID	MP
DRAWN BY	MP
CHECKED BY	BA

SHEET NO.	
-----------	--