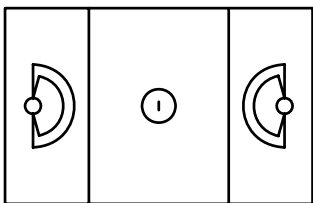
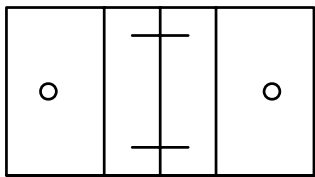


DIEHL ROAD

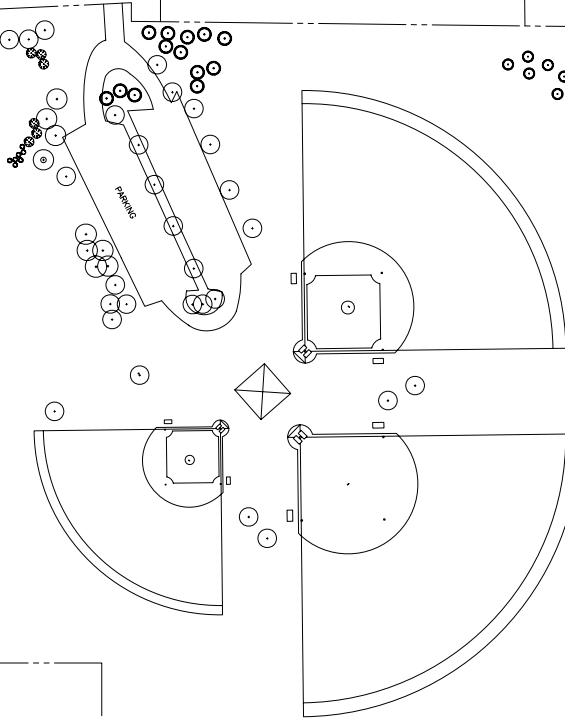
MILL ST.



FIELD # 22  
GIRLS LACROSSE  
(330' x 210')

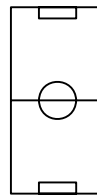


FIELD # 23  
BOYS LACROSSE  
(330' x 180')



FIELD # 21  
LARGE  
(360' x 210')

FIELD # 24  
SMALL  
(135' x 180')



FOREST PRESERVE

NIKE GREENWAY



SHEET NO.
-----------

SCALE	1" = 200'
DATE	Spring 2009
PROJECT ID	
DRAWN BY	MP
CHECKED BY	BA

DATE	REVISIONS

**Field Location Map**

NIKE SPORTS COMPLEX  
288 W. DIEHL RD  
NAPERVILLE, IL



**NAPERVILLE PARK DISTRICT**

Administrative Office 320 W. Jackson Naperville, Illinois 60540-5275	Project Manager: Brock Atwell Telephone 630/848-3534 E-Mail <a href="mailto:batwell@napervilleparks.org">batwell@napervilleparks.org</a> Fax 630/848-5001
---	--