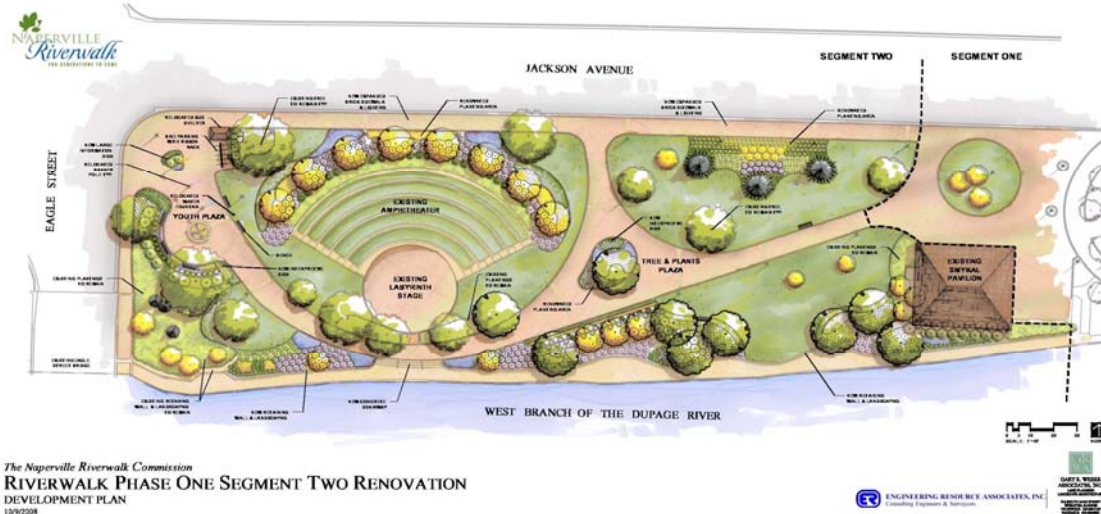


NAPERVILLE RIVERWALK

PHASE I REHABILITATION INFORMATION



EXCITING CHANGES ARE COMING TO THE RIVERWALK SPRING/SUMMER 2010

PROJECT SCOPE:

- **Bulkhead Wall (Supports the lower walkway):** The previously deteriorated wall is being replaced with a sturdy, long-lasting textured concrete wall system.
- **Lower Walkway:** The new walkway will be 5 feet wide with 3 scalloped areas widened to 7 feet.
- **Refurbished Stairway:** Stairs leading to the lower walkway from the Riverwalk Amphitheater will be replaced and renovated.
- **ADA Accessibility:** The pathway east of the amphitheater will be ADA accessible.
- **Youth Plaza:** The Plaza is undergoing a complete redesign.
- **New Landscaping:** New plants, flowers and trees will be installed making the Riverwalk even more beautiful for generations to come.
- **Sidewalk Replacement and Lighting:** The current concrete sidewalk along Jackson Avenue is being replaced with Riverwalk brick pavers and widened to 7 feet with new and refurbished shepherd crook lighting.

**The Riverwalk Amphitheater, Labyrinth and Millennium Wall
will not be included in the renovations.**

AMENITIES/DONOR RECOGNITION:

- The existing amenities will be maintained and/or upgraded while preserving the original donor recognition. Opportunities for future donor recognition will be available.

TIMELINE:

- Spring/Summer 2010: Groundbreaking/Construction
- Summer 2010: New donor opportunities available to the Community
- August 2010: Completion of the project

CONSTRUCTION ACCESS WILL BE AVAILABLE FROM JACKSON AVENUE
FOR MORE INFORMATION, VISIT WWW.NAPERVILLE.IL.US/RIVERWALK.ASPX